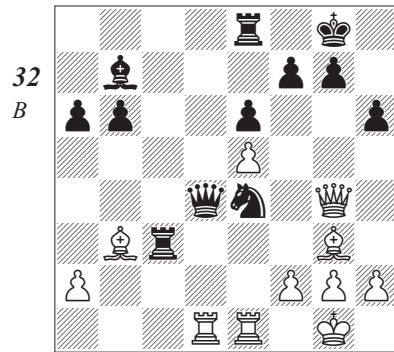
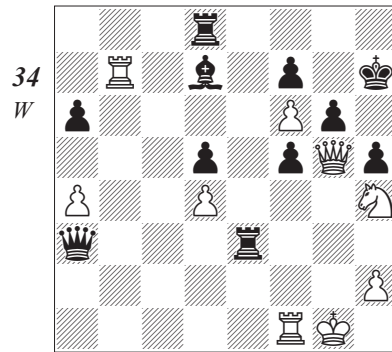


# Contents

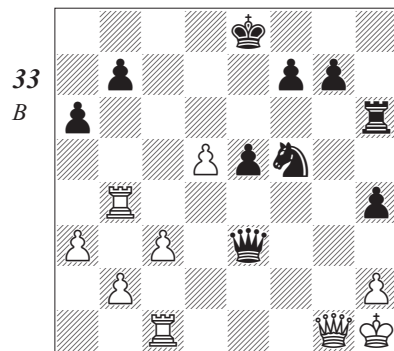
Symbols	4
Introduction	5
<b>1 Attacking the King Caught in the Centre</b>	<b>8</b>
Solutions	19
<b>2 Attacking the Castled King</b>	<b>30</b>
Solutions	44
<b>3 Strike in the Centre</b>	<b>58</b>
Solutions	69
<b>4 Time is Everything!</b>	<b>84</b>
Solutions	96
<b>5 Attacking on Opposite Sides</b>	<b>107</b>
Solutions	119
<b>6 Expect the Unexpected</b>	<b>134</b>
Solutions	146
Index of Players	158



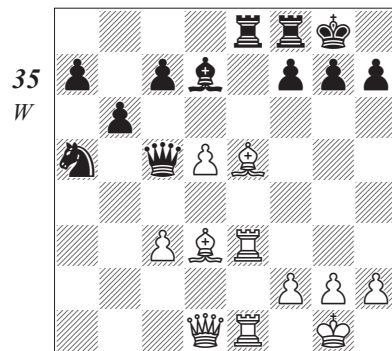
Black is a pawn up and would like to exchange off material to reach an ending, where converting the pawn into a win would be simpler. How did Black achieve his aims?



Black has only pawns to defend his bare king, while White has a queen and a knight ready to attack at any moment. How did White make the decisive breakthrough?



Black has three pieces all actively placed around the white king, which lacks adequate pawn-cover. How did Black win?



Black has just played 24...♙a3-c5??, which was a huge blunder. White's pieces are all well-placed while Black's pieces are off-side. White's next move brings up a common theme. What was it?

**32) Van Wely – Piket**

*Tilburg 1998*

21...♖xg3!

The rest is simple for a player of Piket's strength.

22 ♗xg3

22 hxg3 ♗xf2+ 23 ♖h2 ♘c3 –+.

22...♗xd1 23 ♖xd1 ♘xg3 24 hxg3

Black went on to convert the extra pawn into victory. White resigned on move 38.

**33) S. Haslinger – Gormally**

*British Ch (Edinburgh) 2003*

28...♘g3+! 29 hxg3

29 ♖g2 h3#.

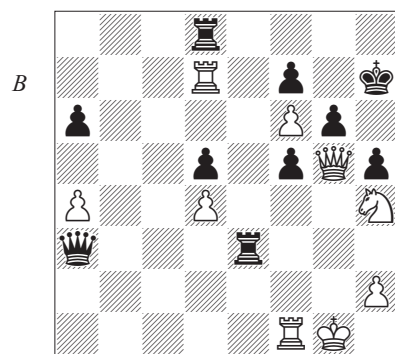
29...♗f3+ 30 ♗g2 hxg3+ 31 ♖g1 ♗e3+ 0-1

White resigned because of the line 32 ♖f1 ♖h1+ 33 ♗xh1 ♗f2#.

**34) Vaganian – Shirov**

*Istanbul OL 2000*

28 ♖xd7! (D)



The d7-bishop was a good defender of the f5-pawn, but now that it is gone

White can break Black's pawn defence.

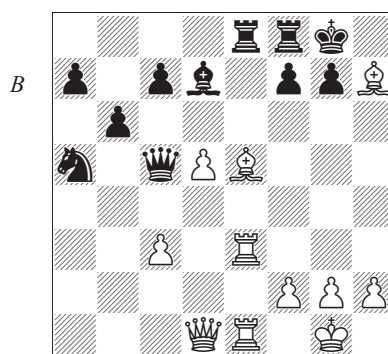
28...♖xd7 29 ♘xf5! 1-0

Black resigned since mate is imminent: 29...gxf5 (29...♖e2 30 ♗h6+ ♖g8 31 ♗g7#) 30 ♗g7#.

**35) J. Polgar – Karpov**

*Hoogeveen 2003*

25 ♔xh7+! (D)



The double bishop sacrifice exposes the black king to White's army.

25...♔xh7 26 ♗h5+ 1-0

Black resigned in view of 26...♔g8 27 ♔xg7! (the e3-rook is perfectly placed, ready to swing over to g3 to deliver mate) 27...♔xg7 (27...f5 28 ♔e5 ♖xe5 29 ♖g3#; 27...f6 28 ♔xf6 ♖xf6 29 ♖g3+ ♖f8 30 ♗h8+ ♖f7 31 ♗g7#) 28 ♖g3+ ♖f6 29 ♗g5#.

**36) Ivanov – Tal**

*Latvia jr 1950*

22 ♔xh7+!

A logical move if we compare the positioning of each army's pieces. The